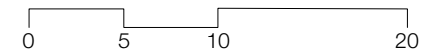


**COMPLEXE MULTISPORTS**

NIVEAU SOUS-SOL

échelle 1:400



terrasse Jura

galerie d'accès gradins

1516 places mobiles

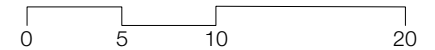
308 places fixes

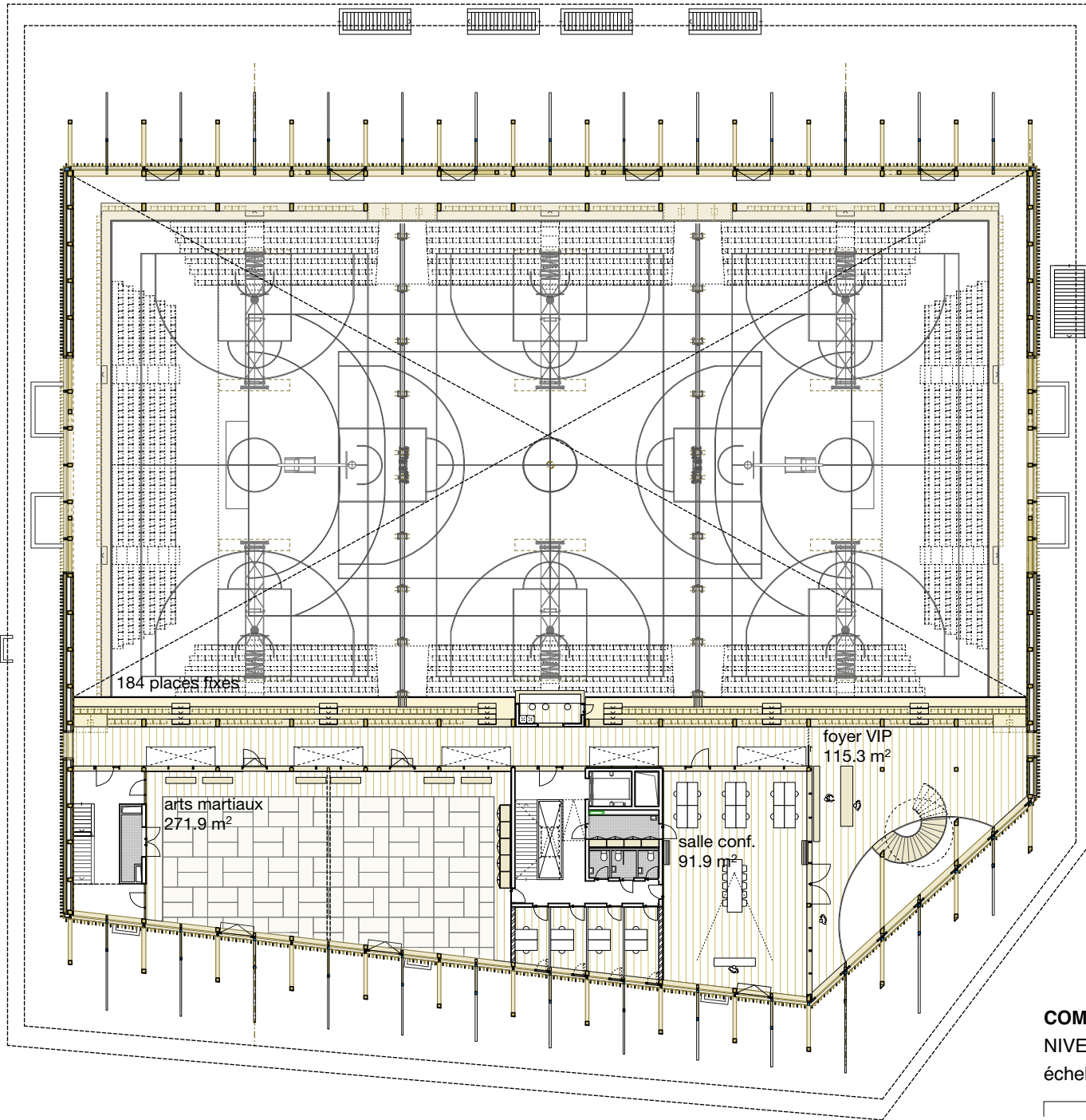
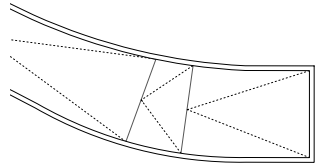
salle polyvalente  
270.5 m<sup>2</sup>

foyer  
224.3 m<sup>2</sup>

esplanade  
des sports

**COMPLEXE MULTISPORTS**  
NIVEAU SOUS-SOL  
échelle 1:400





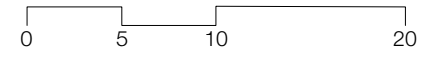
184 places fixes

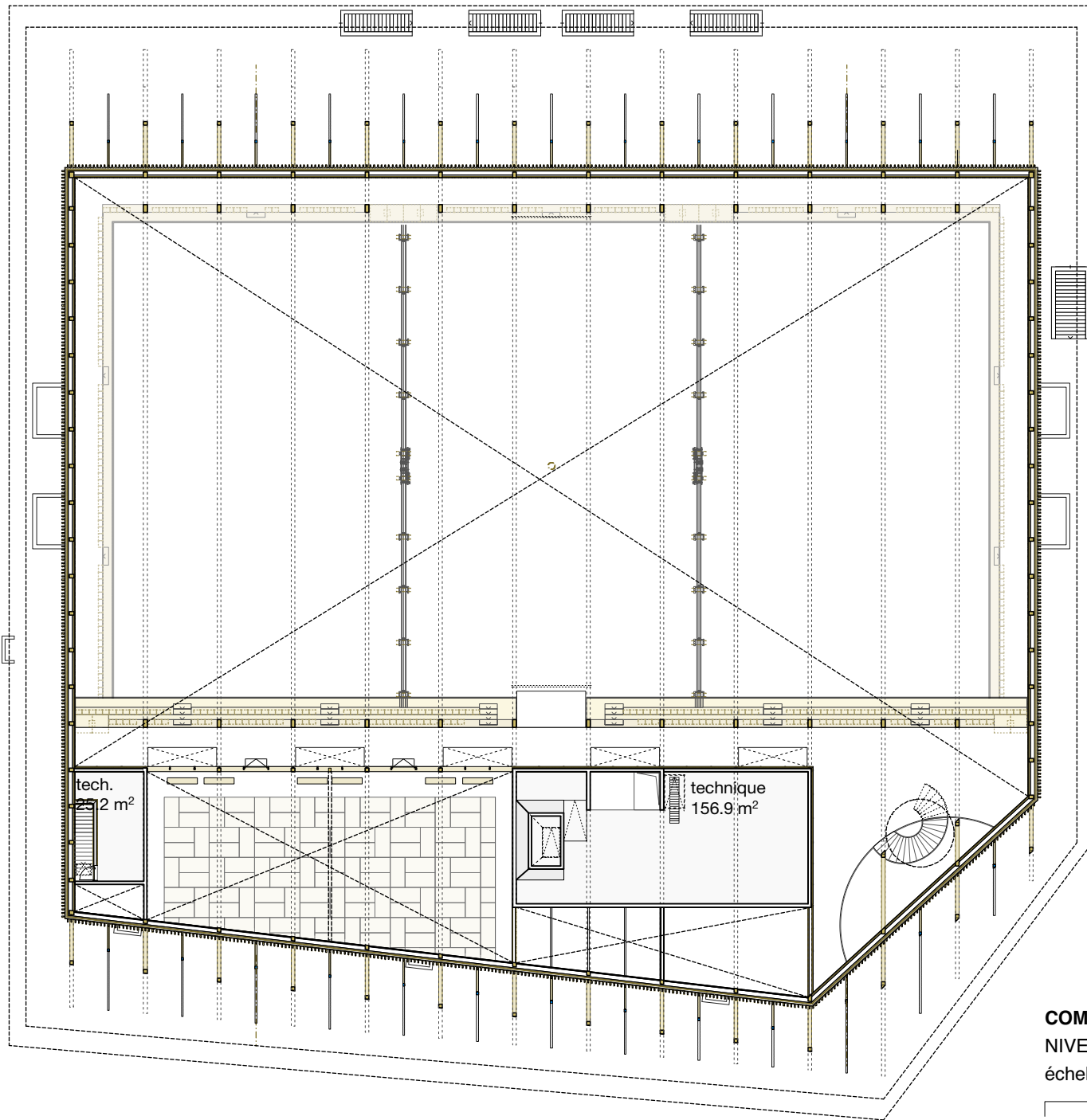
arts martiaux  
271.9 m<sup>2</sup>

salle conf.  
91.9 m<sup>2</sup>

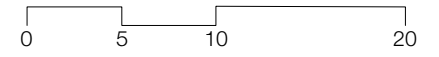
foyer VIP  
115.3 m<sup>2</sup>

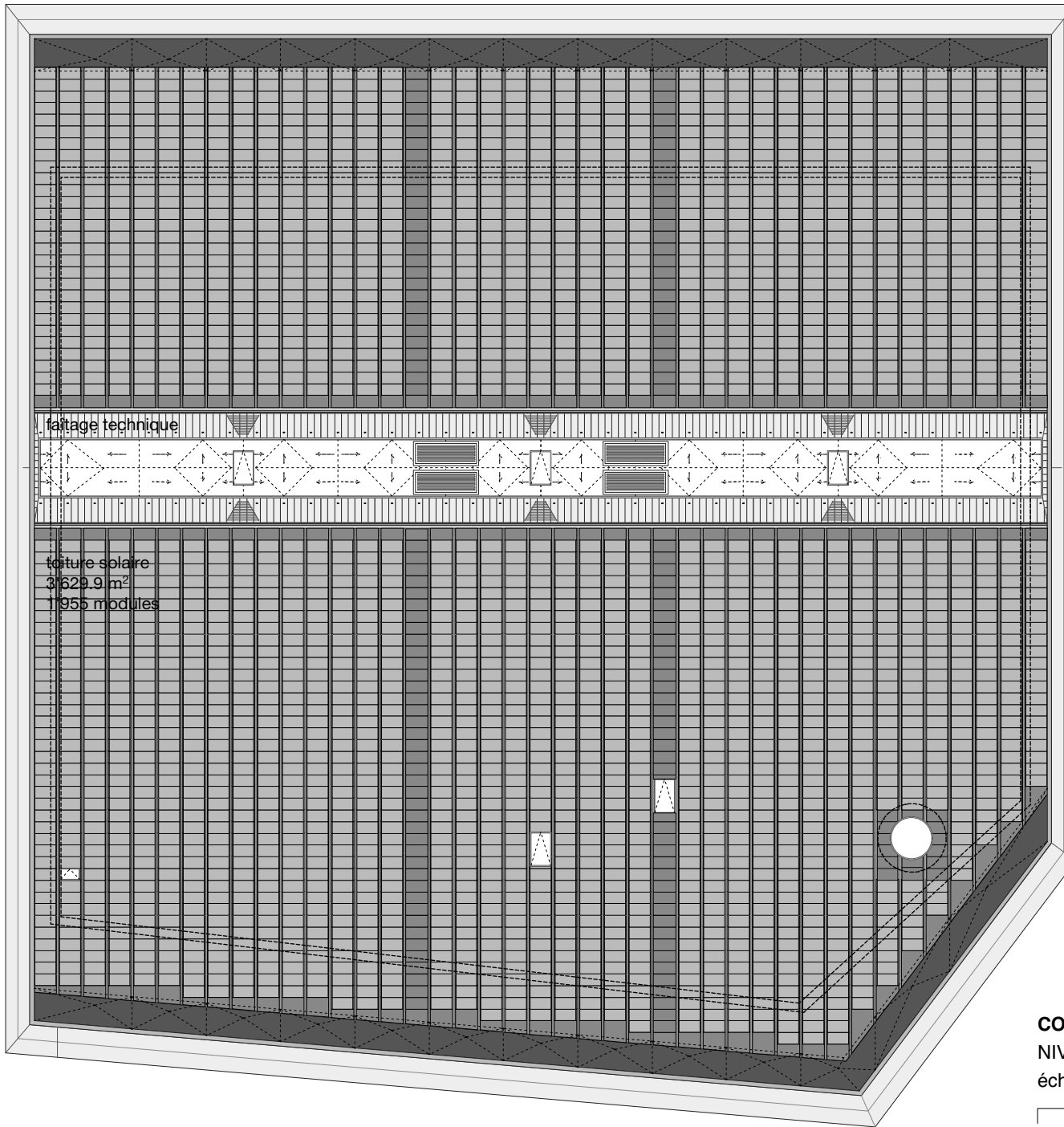
**COMPLEXE MULTISPORTS**  
NIVEAU ÉTAGE  
échelle 1:400



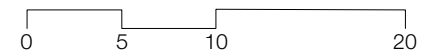


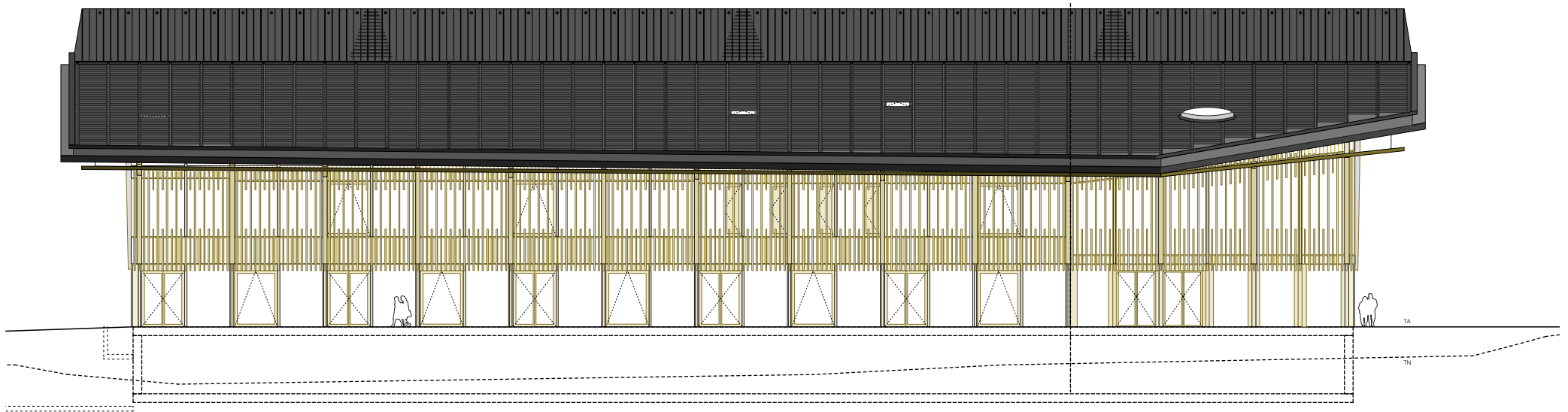
**COMPLEXE MULTISPORTS**  
NIVEAU MEZZANINE  
échelle 1:400





**COMPLEXE MULTISPORTS**  
NIVEAU TOITURE  
échelle 1:400

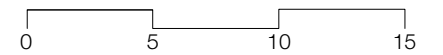


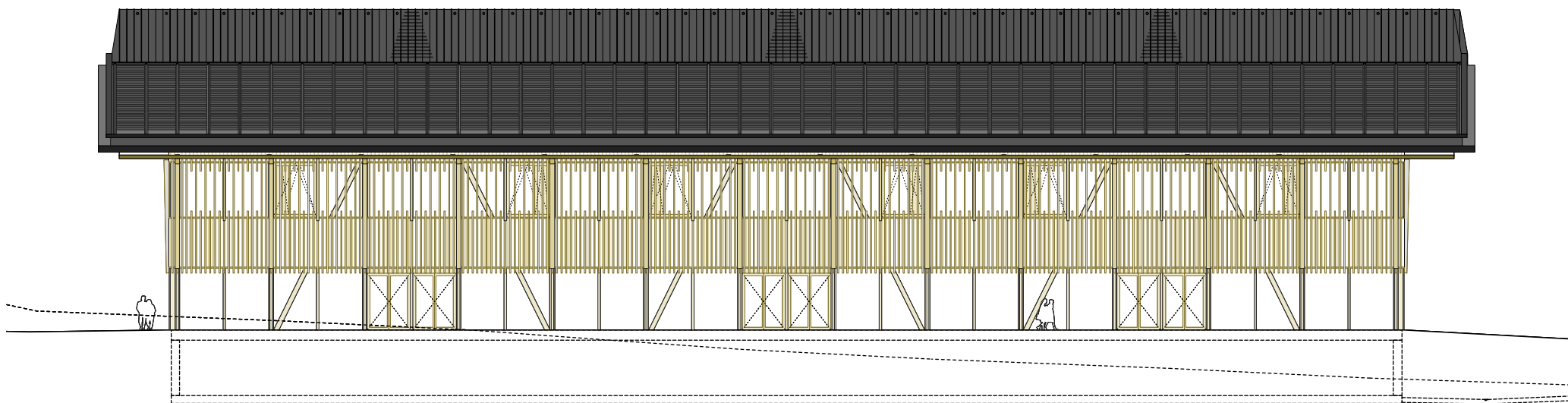


**COMPLEXE MULTISPORTS**

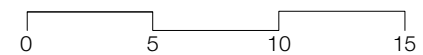
ÉLÉVATION NORD

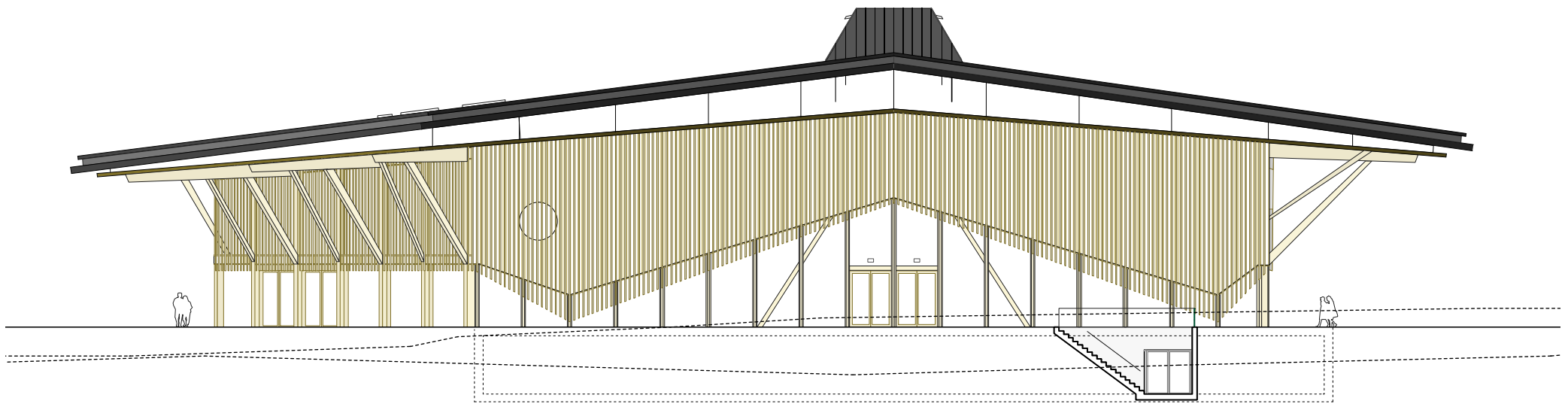
échelle 1:300



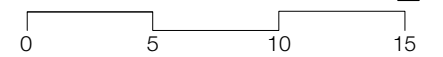


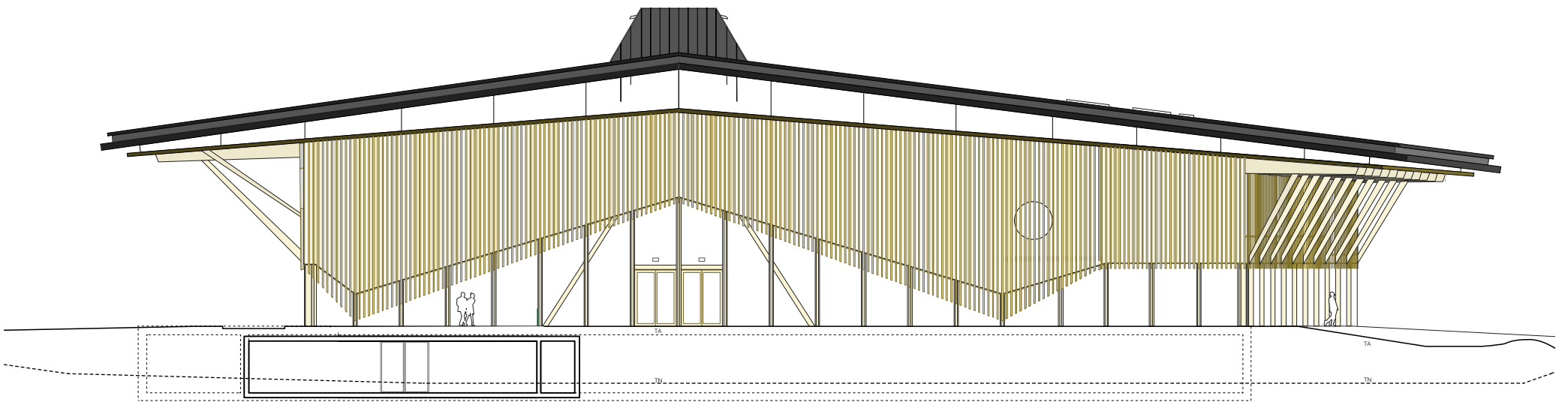
**COMPLEXE MULTISPORTS**  
ÉLÉVATION NORD  
échelle 1:300



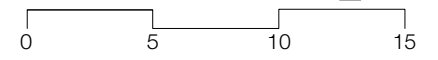


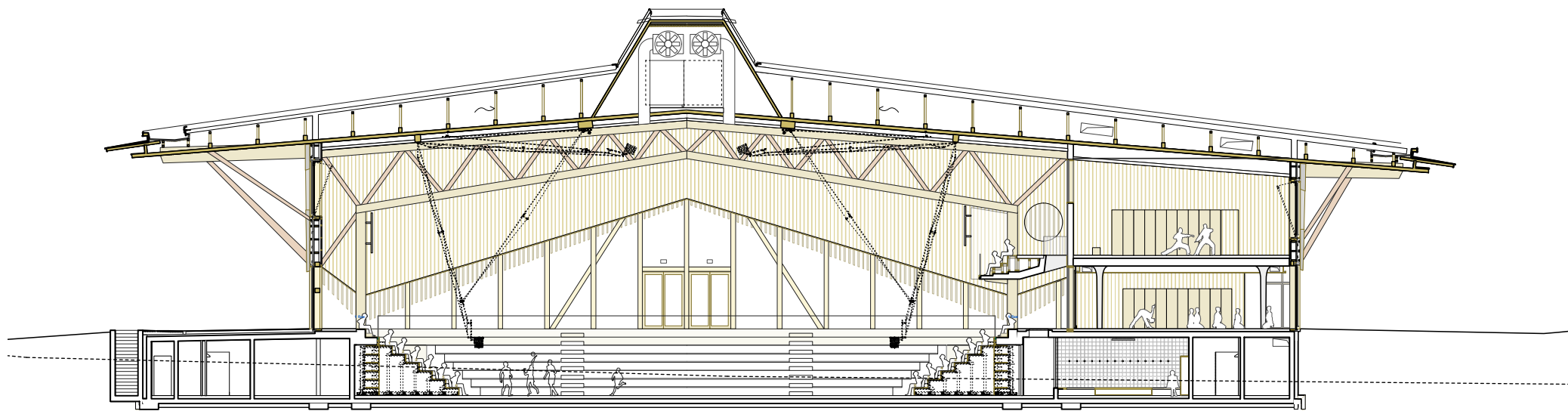
**COMPLEXE MULTISPORTS**  
ÉLÉVATION EST  
échelle 1:300



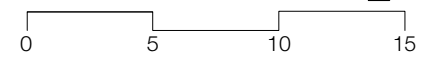


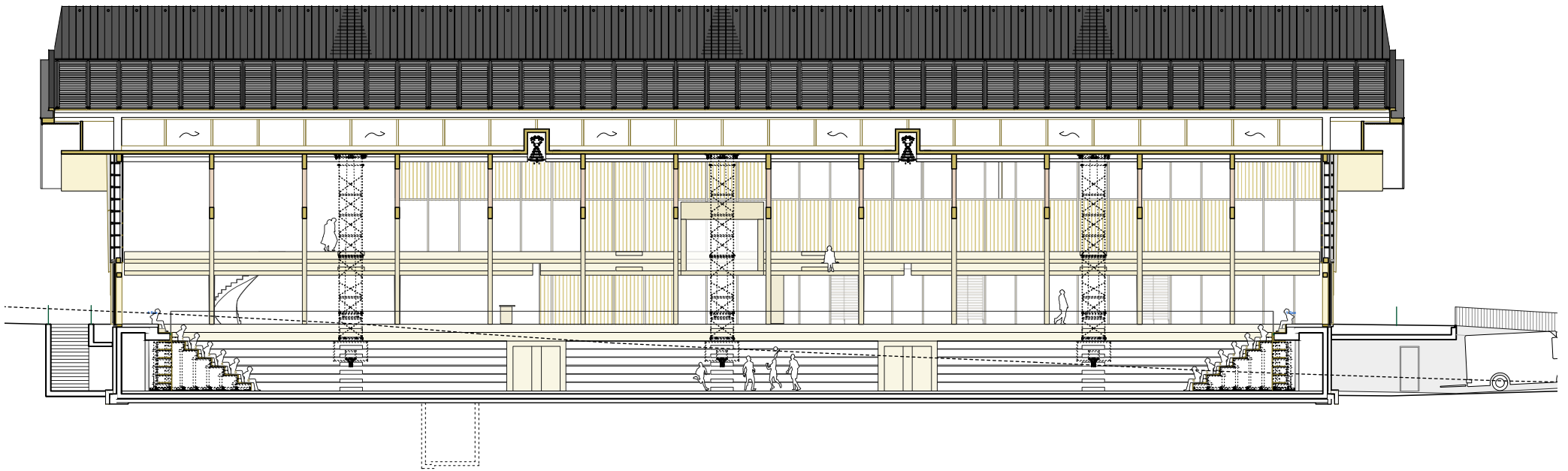
**COMPLEXE MULTISPORTS**  
ÉLÉVATION OUEST  
échelle 1:300





**COMPLEXE MULTISPORTS**  
COUPE LONGITUDINALE  
échelle 1:300

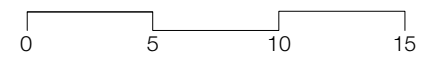
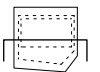


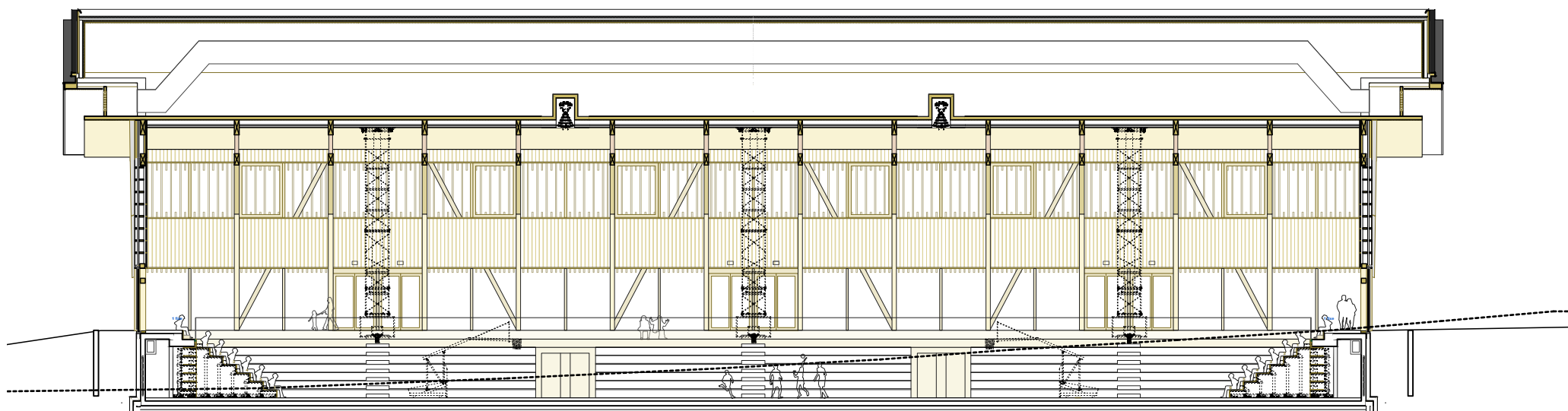


**COMPLEXE MULTISPORTS**

COUPE TRANSVERSALE

échelle 1:300





**COMPLEXE MULTISPORTS**

COUPE TRANSVERSALE

échelle 1:300

